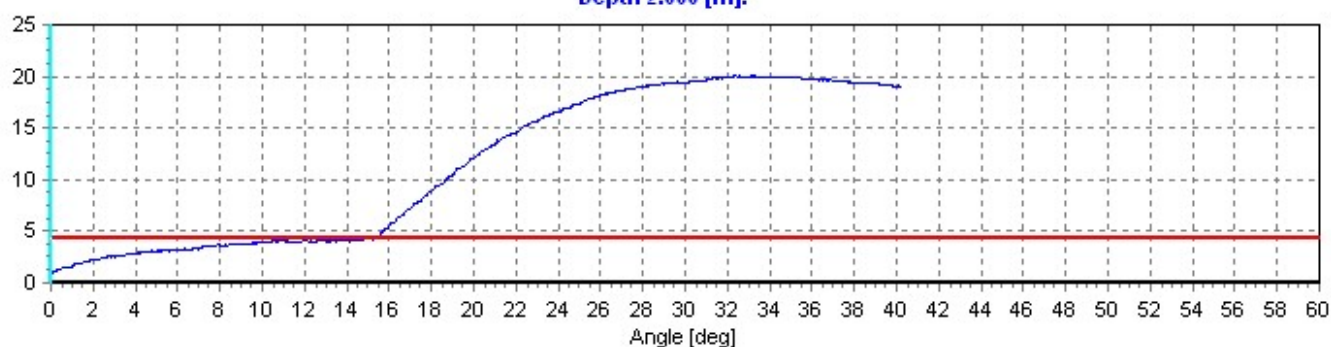
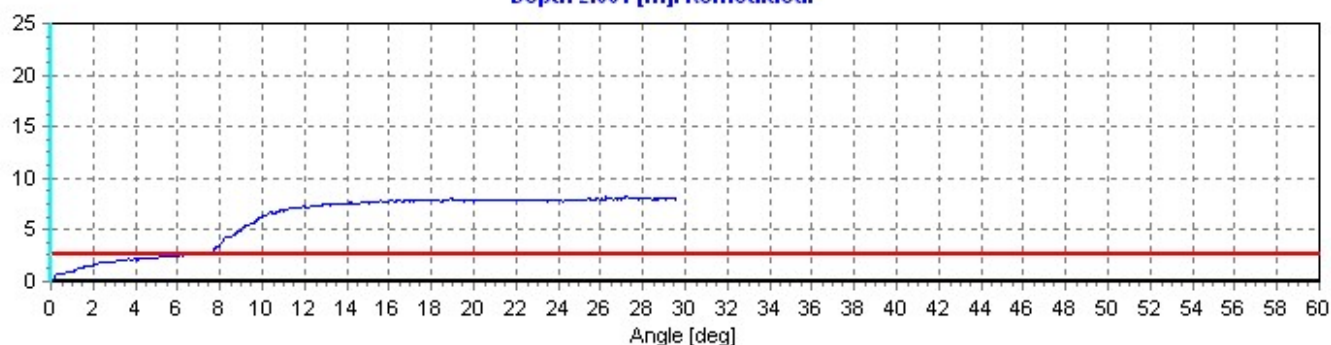


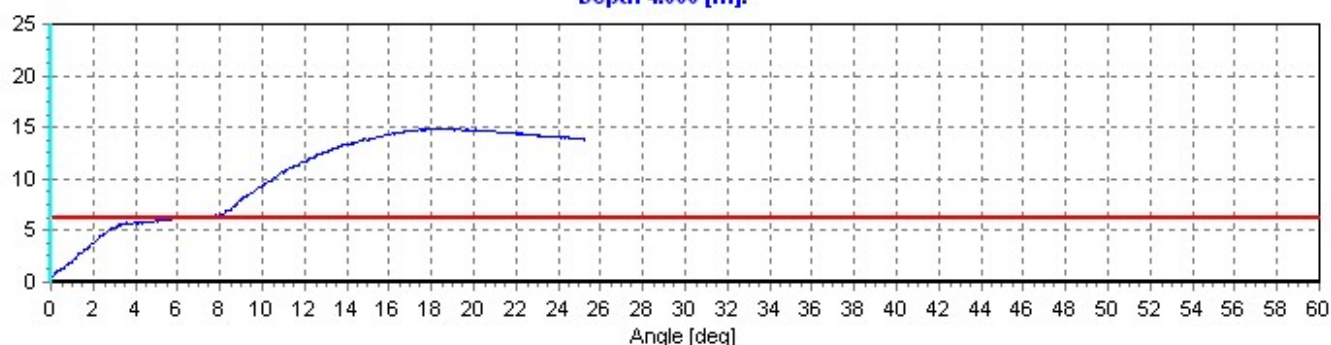
**Depth 2.000 [m].**



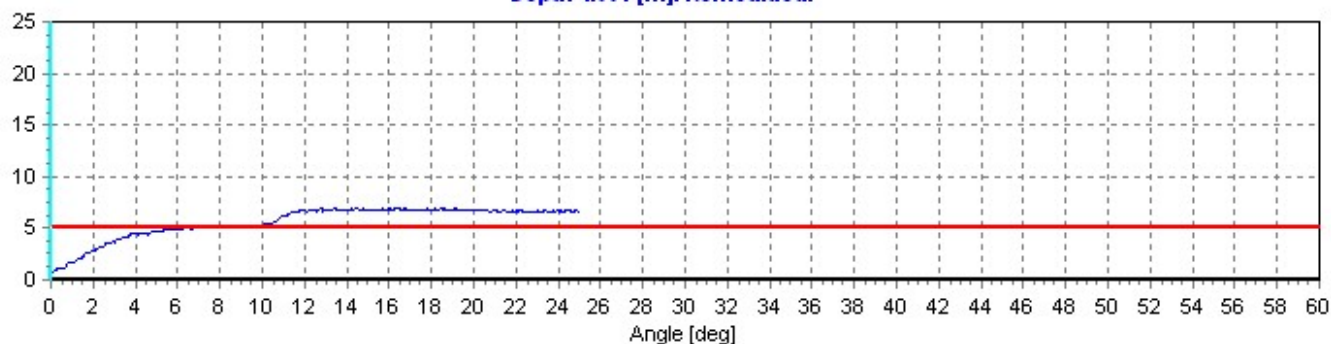
**Depth 2.001 [m]. Remoulded.**



**Depth 4.000 [m].**

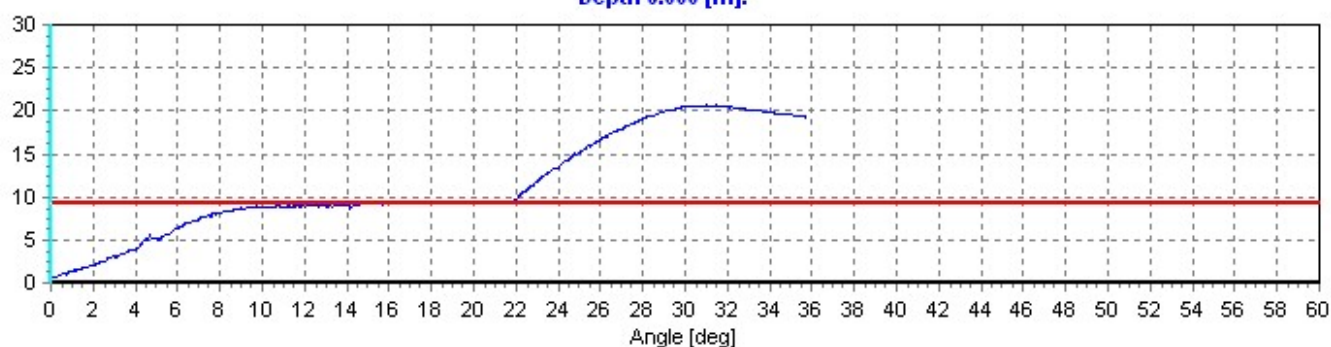


**Depth 4.001 [m]. Remoulded.**



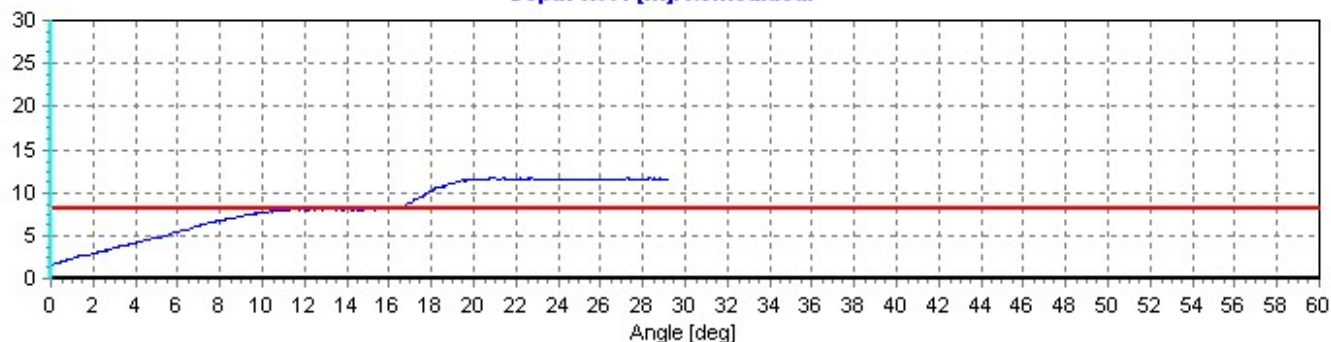
Location P. Thao Dien, Tp. Thu Duc, Tp. HCM	Position	Ground level 0	Borehole ID. HK1
Project ID TDH BUILDING	Client	Date	Scale 1:100
Project		Page 1/3	Fig.
Vane type & size Tapered lower end, 11.0 x 5.0 cm		File HK1.vct	

**Depth 6.000 [m].**



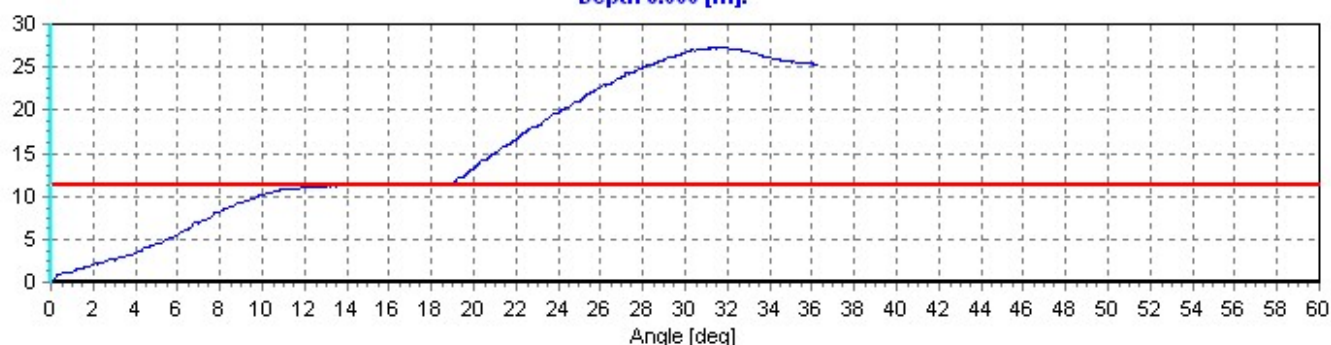
Shear strength = 22.82 [kPa], Max. torque = 20.64 [Nm], Rod friction = 9.23 [Nm]

**Depth 6.001 [m]. Remoulded.**



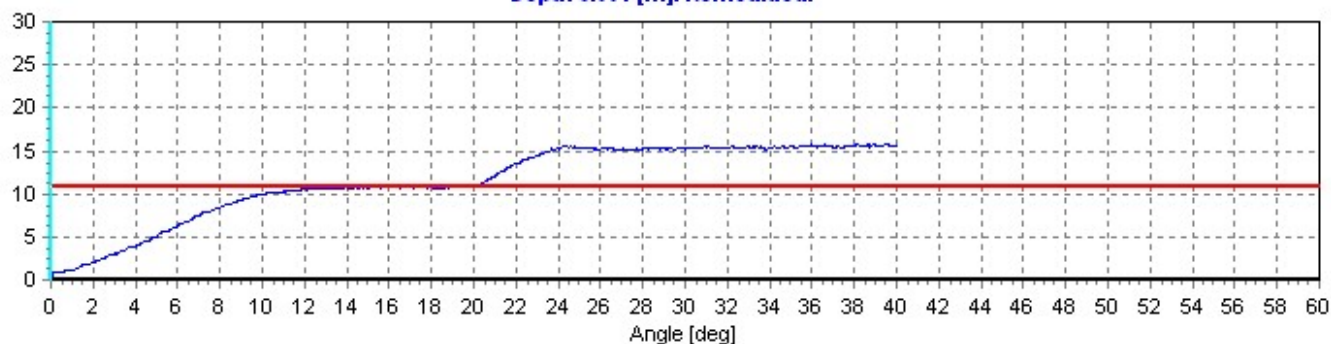
Shear strength = 7.28 [kPa], Max. torque = 11.73 [Nm], Rod friction = 8.09 [Nm]

**Depth 8.000 [m].**



Shear strength = 32.12 [kPa], Max. torque = 27.37 [Nm], Rod friction = 11.31 [Nm]

**Depth 8.001 [m]. Remoulded.**

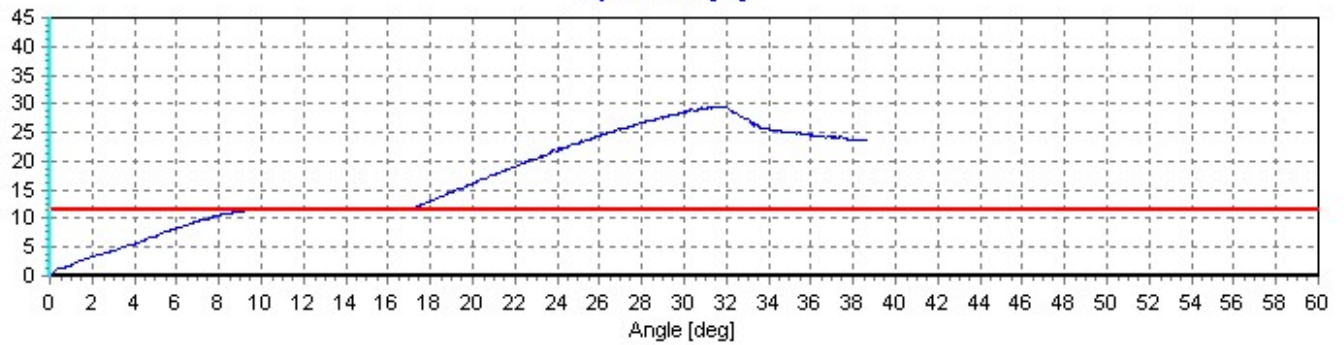


Shear strength = 10.26 [kPa], Max. torque = 15.86 [Nm], Rod friction = 10.73 [Nm]

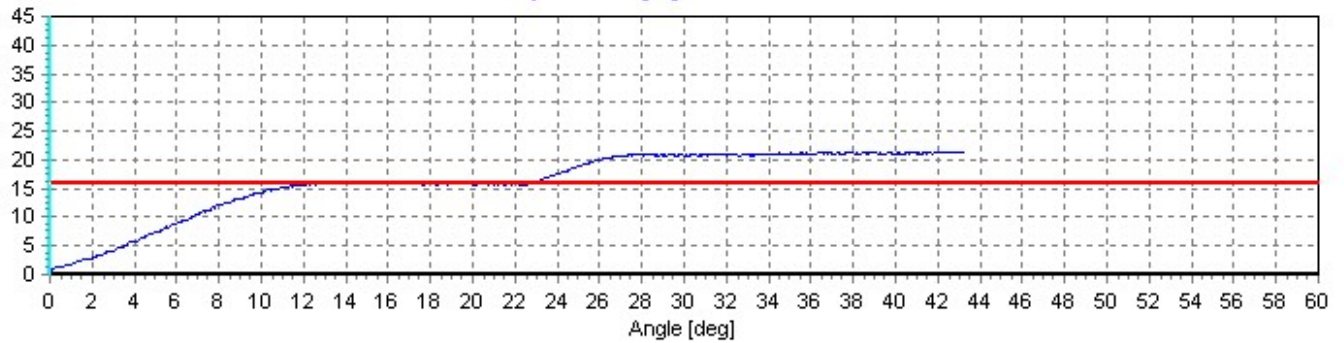


Location P. Thao Dien, Tp. Thu Duc, Tp. HCM	Position	Ground level 0	Borehole ID. HK1
Project ID TDH BUILDING	Client	Date	Scale 1:100
Project		Page 2/3	Fig.
Vane type & size Tapered lower end, 11.0 x 5.0 cm		File HK1.vct	

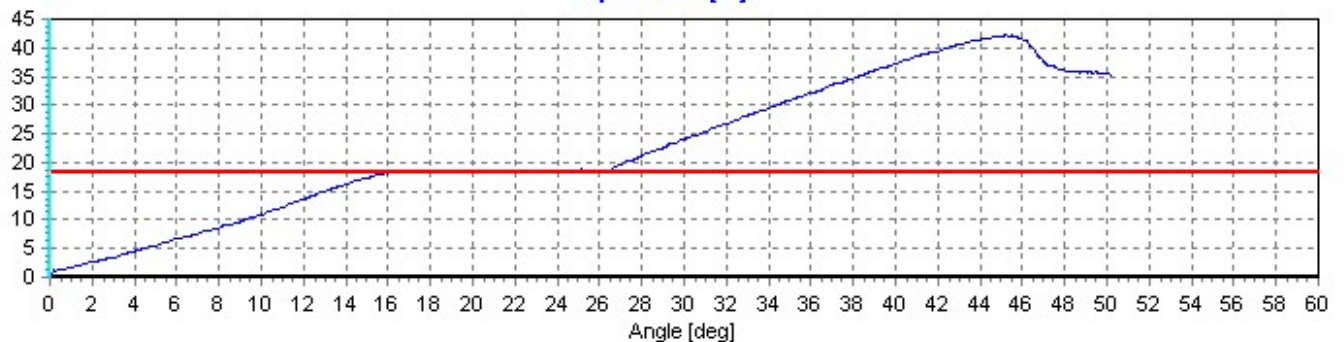
**Depth 10.000 [m].**



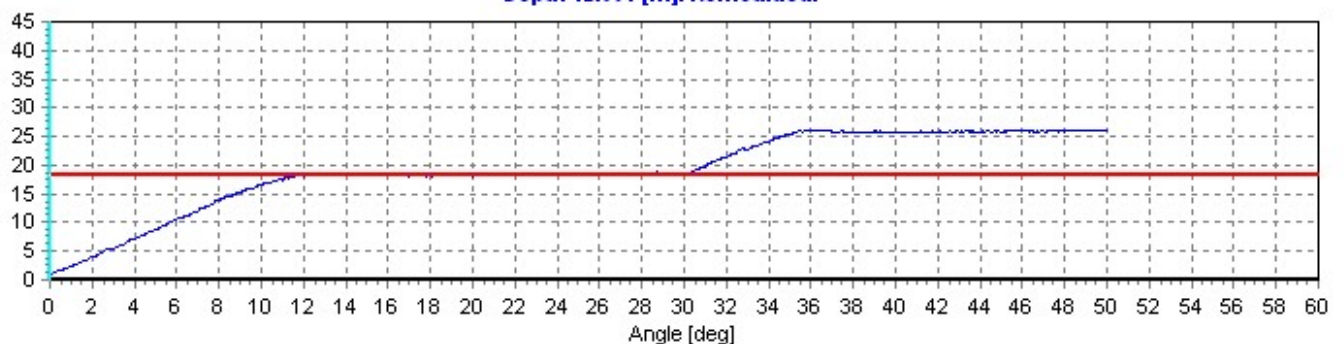
**Depth 10.001 [m]. Remoulded.**



**Depth 12.000 [m].**

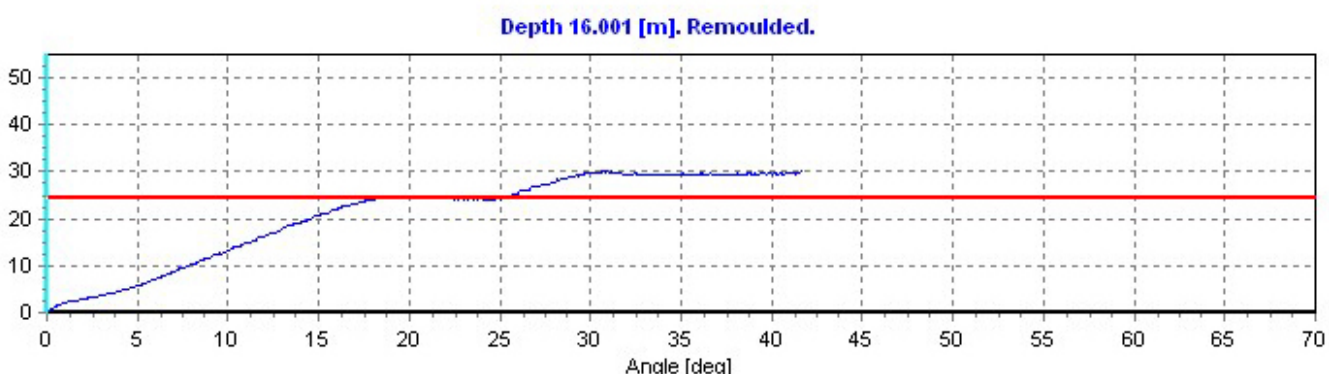
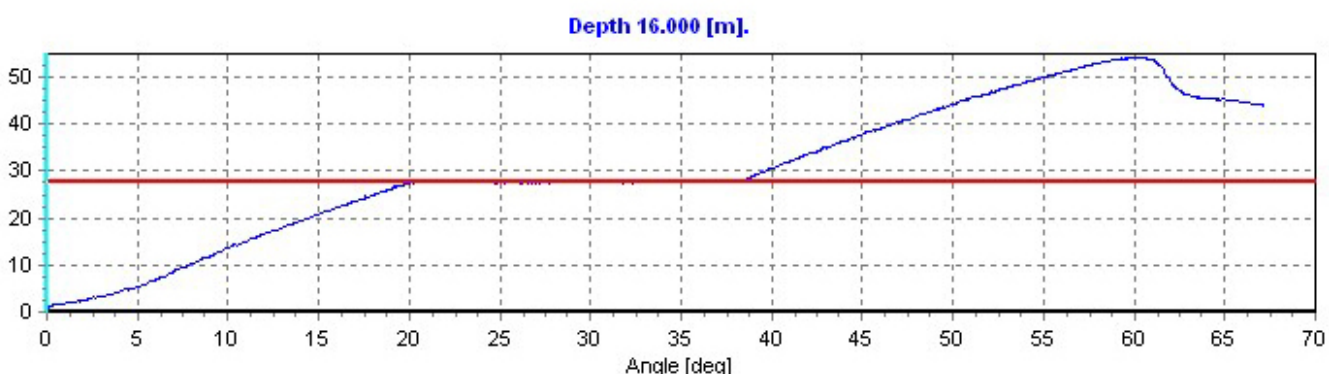
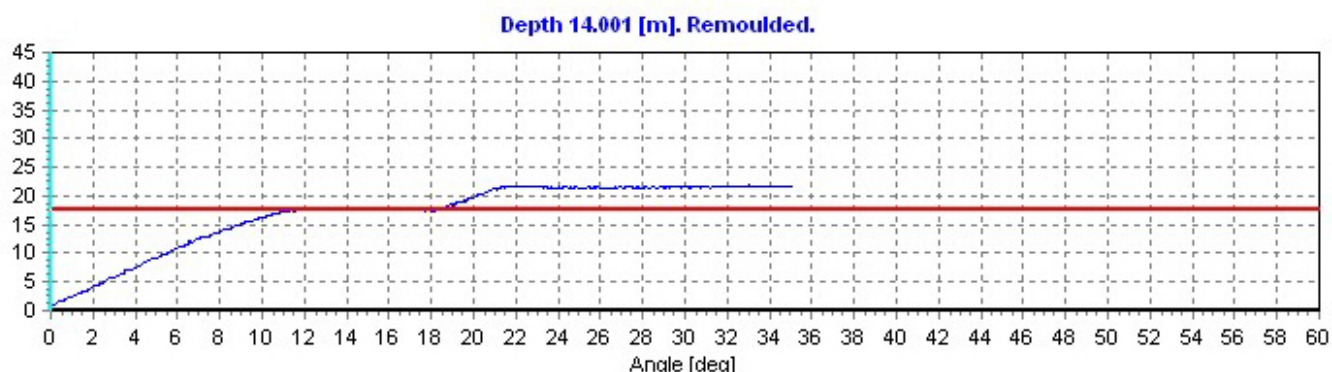
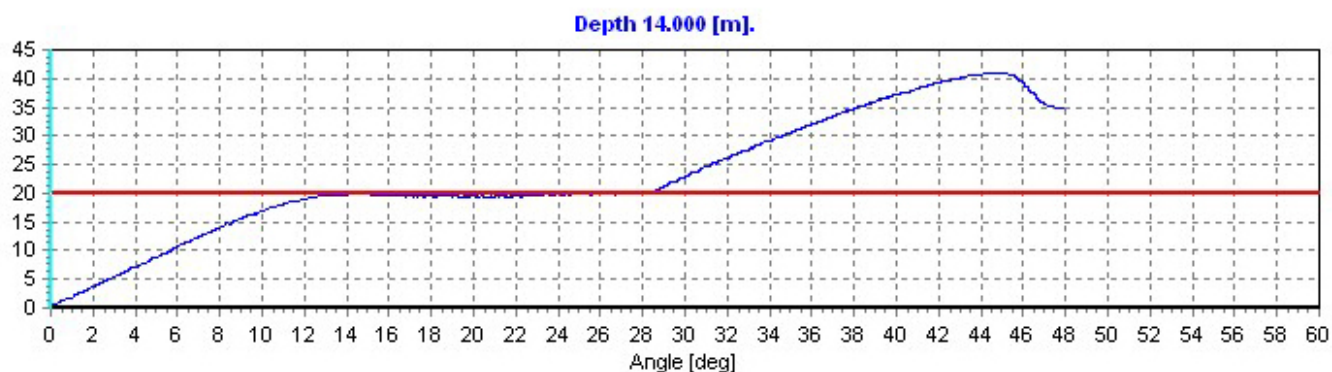


**Depth 12.001 [m]. Remoulded.**



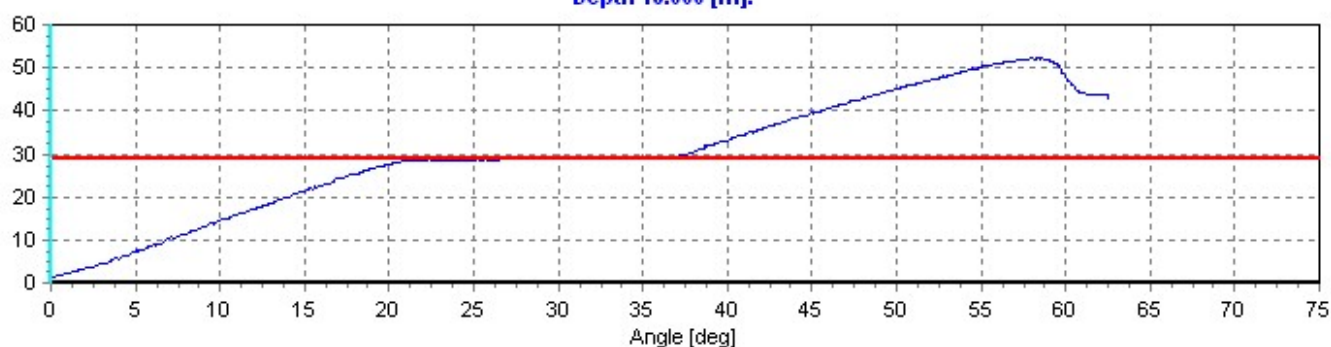
Location P. Thao Dien, Tp. Thu Duc, Tp. HCM	Position	Ground level 0	Borehole ID. HK1
Project ID TDH BUILDING	Client	Date	Scale 1:100
Project		Page 3/3	Fig.
Vane type & size Tapered lower end, 11.0 x 5.0 cm		File HK1.vct	





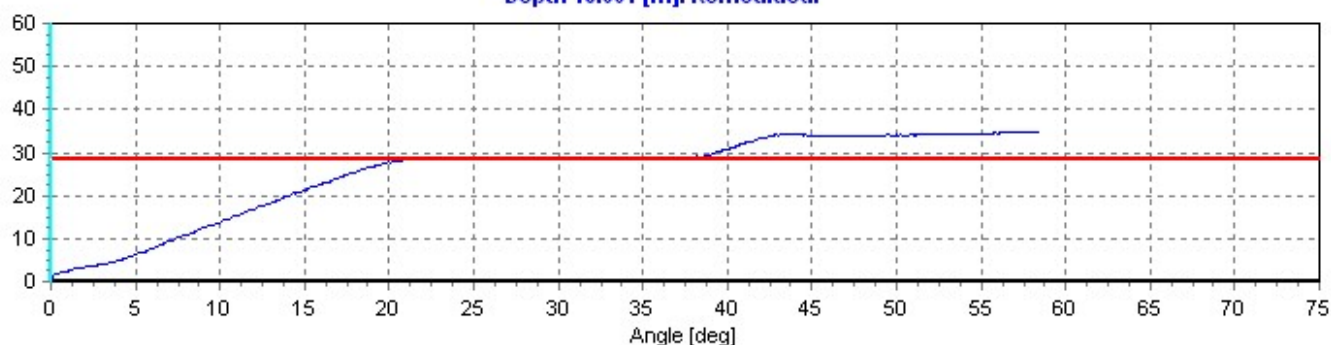
Location P. Thao Dien, Tp. Thu Duc, Tp. HCM	Position	Ground level	Borehole ID. HK1
Project ID TDH BUILDING	Client	Date	Scale 1:100
Project		Page 1/4	Fig.
Vane type & size Tapered lower end, 11.0 x 5.0 cm		File HK1.vct	

**Depth 18.000 [m].**



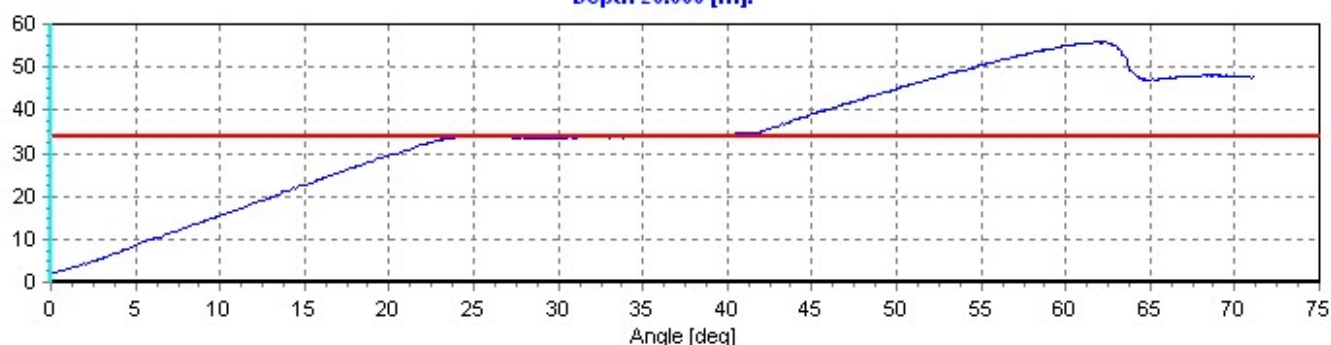
Shear strength = 46.84 [kPa], Max. torque = 52.31 [Nm], Rod friction = 28.89 [Nm]

**Depth 18.001 [m]. Remoulded.**



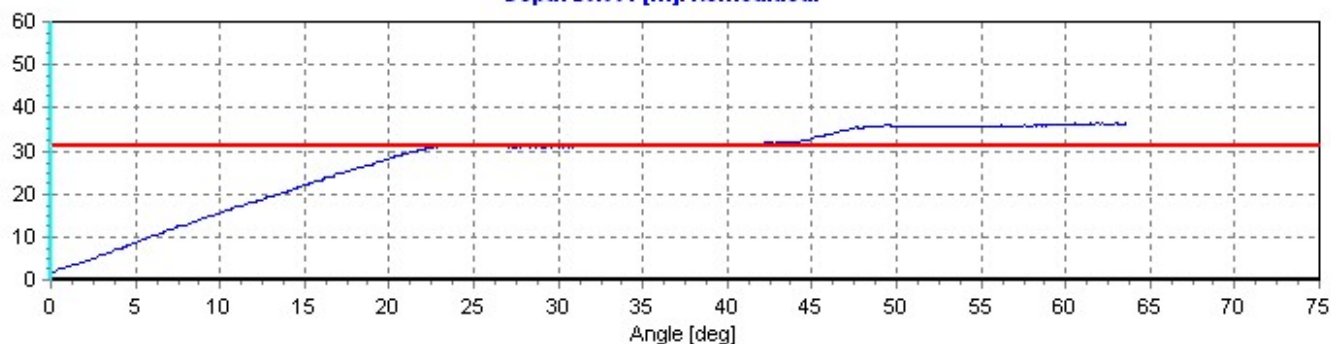
Shear strength = 12.70 [kPa], Max. torque = 34.81 [Nm], Rod friction = 28.46 [Nm]

**Depth 20.000 [m].**



Shear strength = 44.46 [kPa], Max. torque = 55.93 [Nm], Rod friction = 33.70 [Nm]

**Depth 20.001 [m]. Remoulded.**

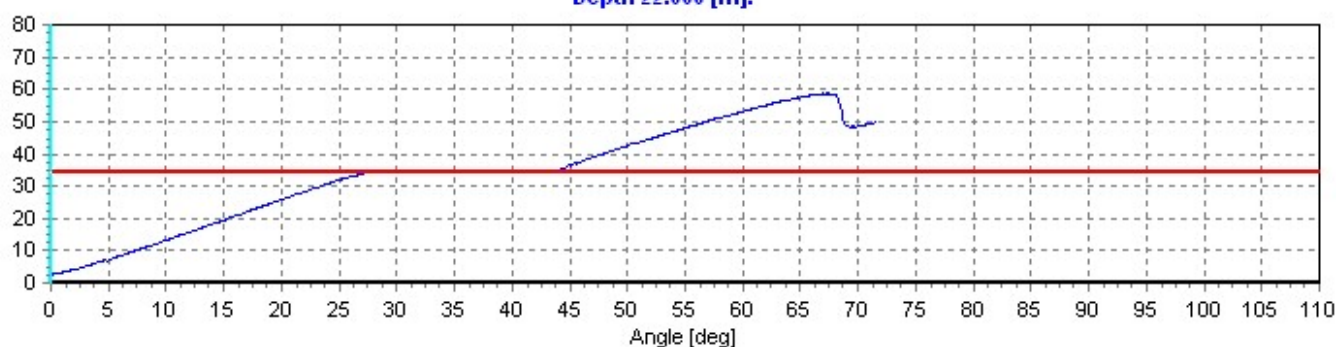


Shear strength = 10.68 [kPa], Max. torque = 36.43 [Nm], Rod friction = 31.09 [Nm]



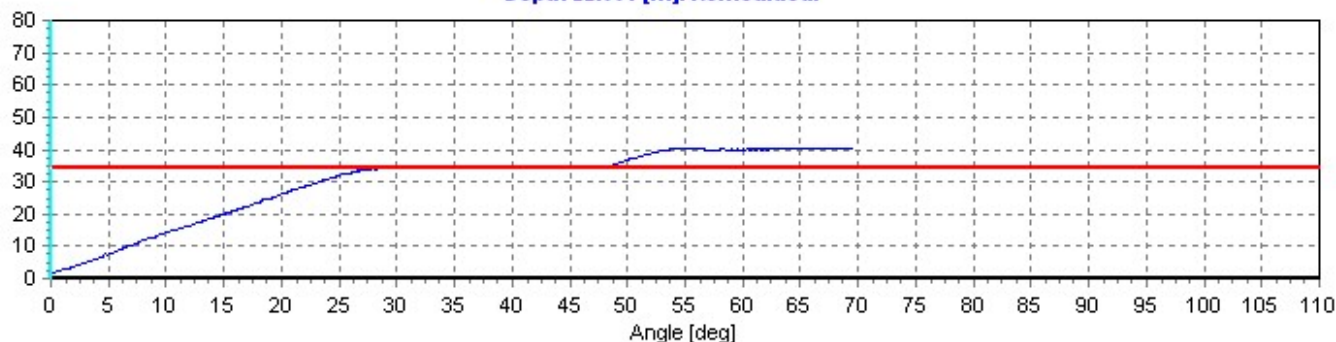
Location P. Thao Dien, Tp. Thu Duc, Tp. HCM	Position	Ground level	Borehole ID. HK1
Project ID TDH BUILDING	Client	Date	Scale 1:100
Project		Page 1/3	Fig.
Vane type & size Tapered lower end, 11.0 x 5.0 cm		File HK1.vct	

**Depth 22.000 [m].**



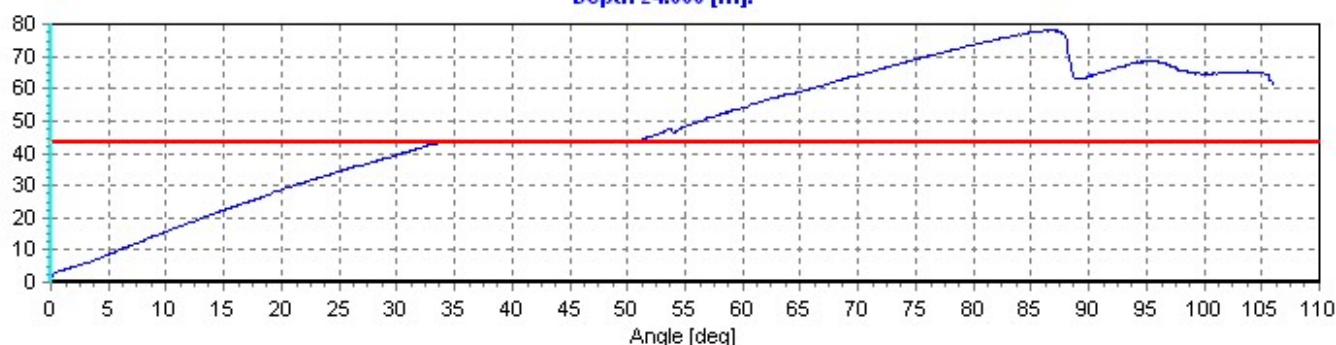
Shear strength = 48.78 [kPa], Max. torque = 58.77 [Nm], Rod friction = 34.38 [Nm]

**Depth 22.001 [m]. Remoulded.**



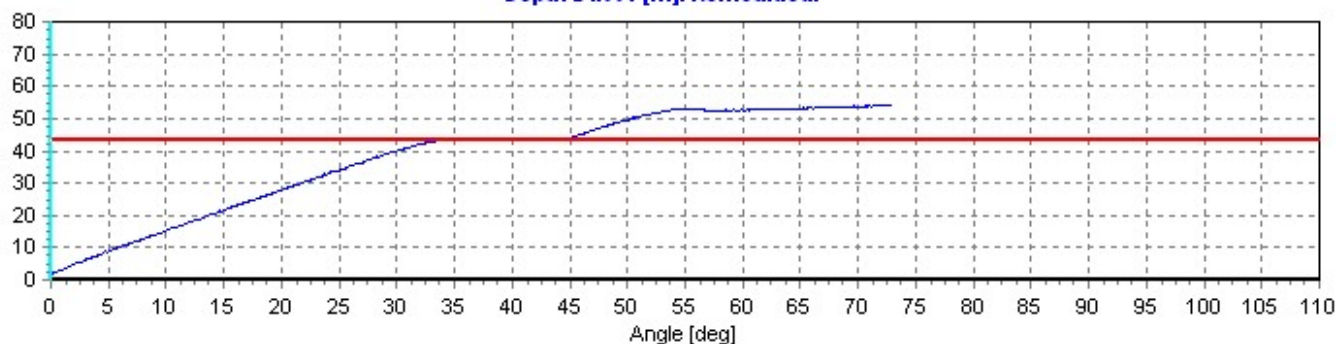
Shear strength = 11.86 [kPa], Max. torque = 40.51 [Nm], Rod friction = 34.58 [Nm]

**Depth 24.000 [m].**



Shear strength = 69.80 [kPa], Max. torque = 78.11 [Nm], Rod friction = 43.21 [Nm]

**Depth 24.001 [m]. Remoulded.**



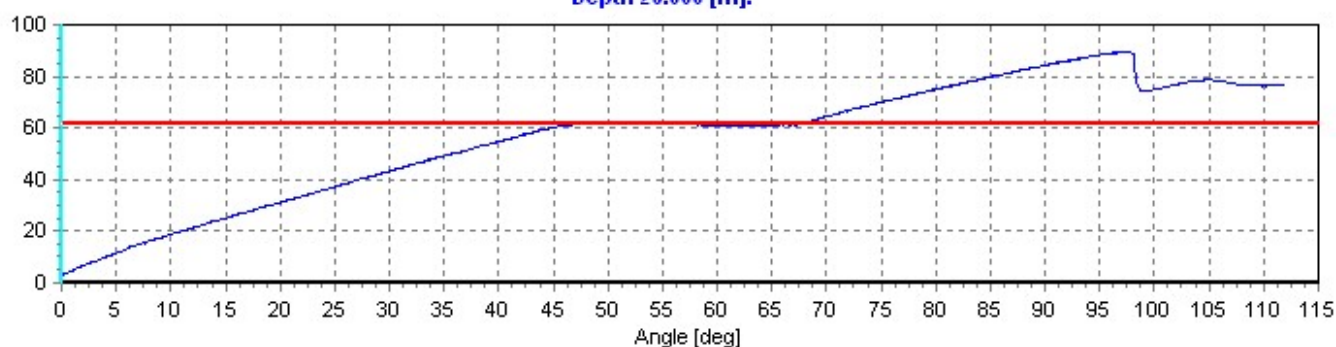
Shear strength = 21.38 [kPa], Max. torque = 54.09 [Nm], Rod friction = 43.40 [Nm]



Location P. Thao Dien, Tp. Thu Duc, Tp. HCM	Position	Ground level	Borehole ID. HK1
Project ID TDH BUILDING	Client	Date	Scale 1:100
Project		Page 2/3	Fig.
Vane type & size Tapered lower end, 11.0 x 5.0 cm		File HK1.vct	

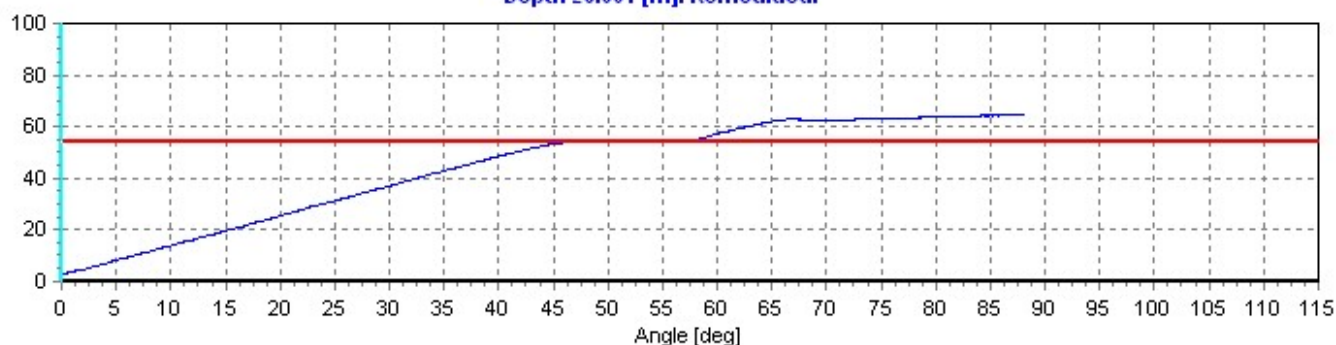


**Depth 26.000 [m].**



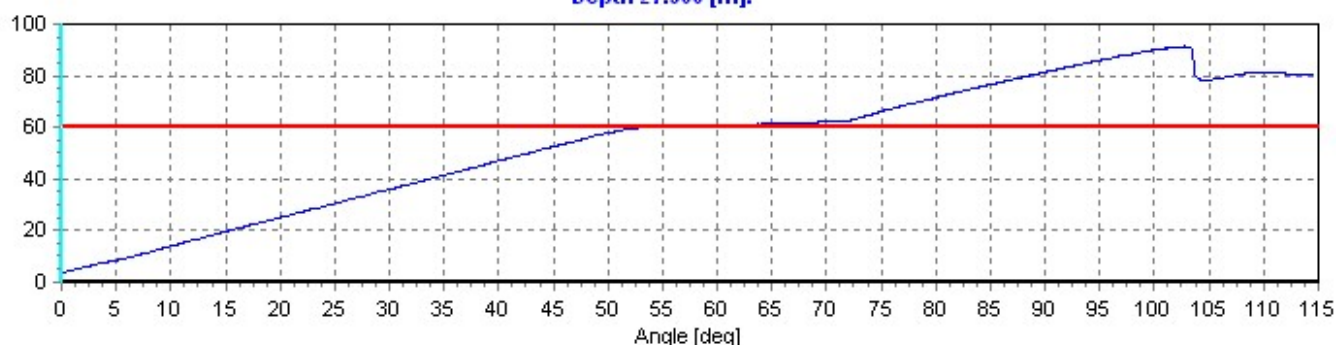
Shear strength = 55.72 [kPa], Max. torque = 89.36 [Nm], Rod friction = 61.50 [Nm]

**Depth 26.001 [m]. Remoulded.**



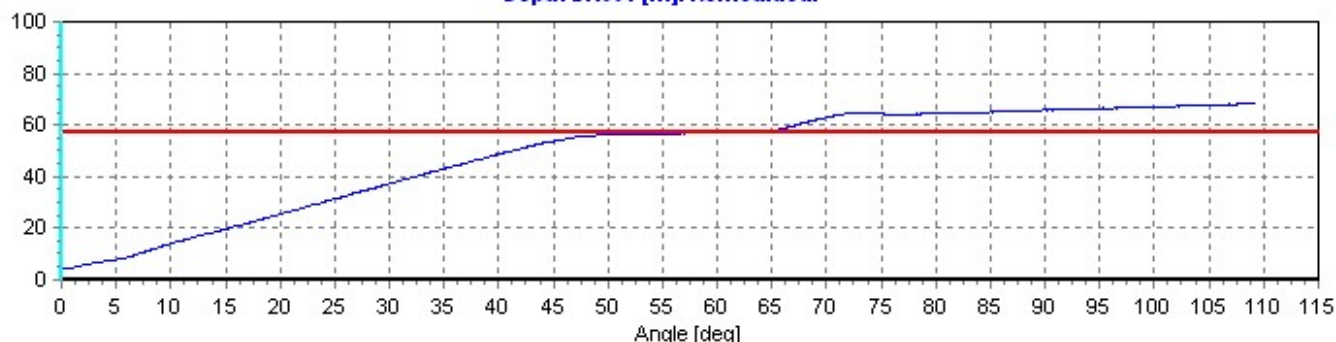
Shear strength = 20.60 [kPa], Max. torque = 64.78 [Nm], Rod friction = 54.48 [Nm]

**Depth 27.300 [m].**



Shear strength = 59.88 [kPa], Max. torque = 91.39 [Nm], Rod friction = 61.45 [Nm]

**Depth 27.301 [m]. Remoulded.**



Shear strength = 22.74 [kPa], Max. torque = 68.47 [Nm], Rod friction = 57.10 [Nm]



Location P. Thao Dien, Tp. Thu Duc, Tp. HCM	Position	Ground level	Borehole ID. HK1
Project ID TDH BUILDING	Client	Date	Scale 1:100
Project		Page 3/3	Fig.
Vane type & size Tapered lower end, 11.0 x 5.0 cm		File HK1.vct	